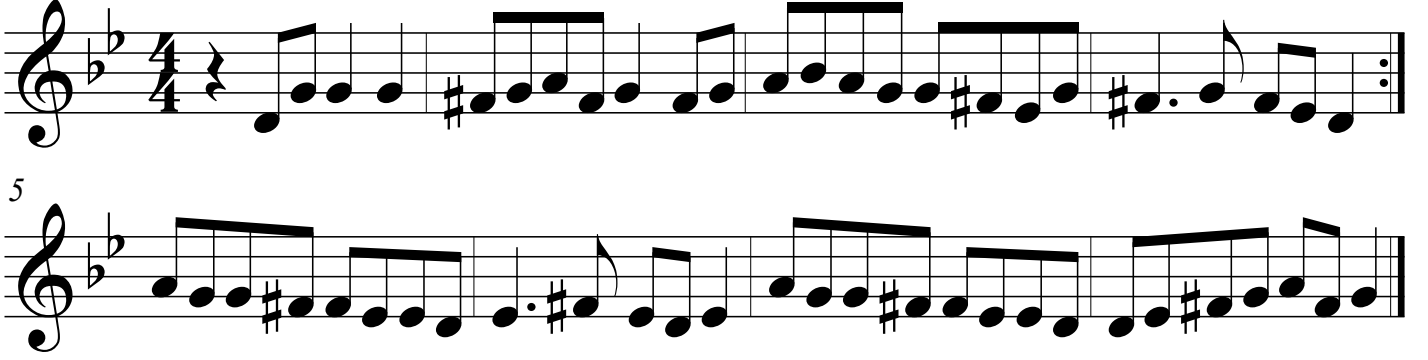


فوق إناخل - Fog elna khel

IRAQI FOLK SONG
COMPOSED BY OTHMAN AL MUSALLI



معروفة بعنوان فوق النخل

فوق إناخل فوق يابا فوق الناخل فوق
مدري لامع خذك يابا مدري لامع فوق
ولله ما ريدده باليني بلوة

Foq elna khel foq, yaba foq elna khel foq
Madri lameh khaddak yaba madri lameh toq
Walla ma rida, balini balwa, ah

Engelsk tekstoversættelse

There above, I have an intimate friend.
Is it his cheek that shone? Or is it the moon up above?
By God, I do not want him, his love troubles me